

Gastro-Intestinal System I

Contains of this LAB.

Submandibular Gland (MH095)
Parotid Gland (MH094)
Sublingual Gland (MH096)

Edited by Fahad A.

Mosul Medical College 2018-2019 2th stage



Histology Guide - Aperio slide scanner

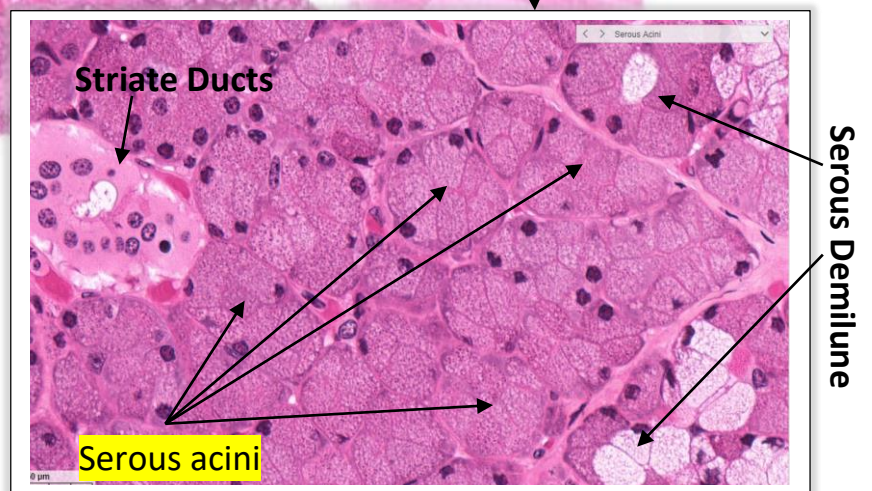
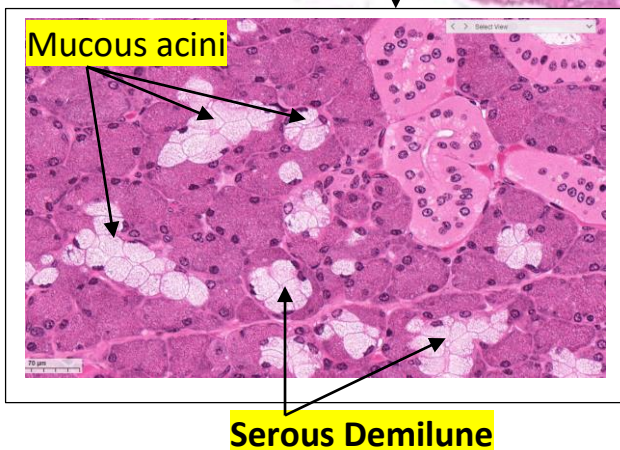
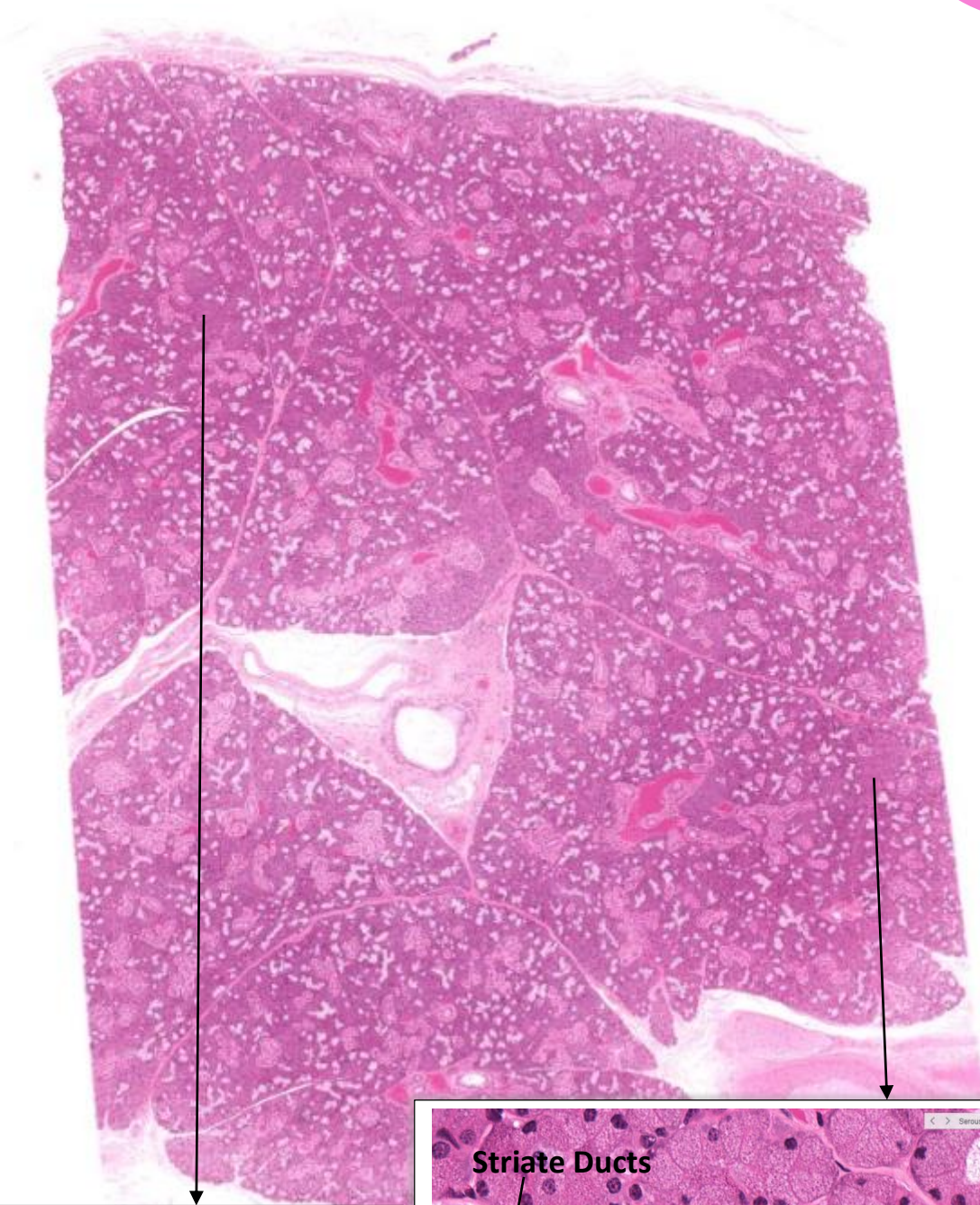
This copy is used to study tissues with **Histology Guide** website to get a better result and a deeper understanding.
Do not hesitate to ask the doctors of the histology branch.

Submandibular Gland

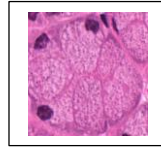
Learning activity 1 :-

It secretes
serous and
mucous

Mixed

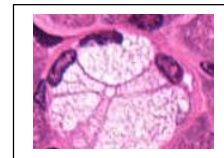


ملخص الانواع الثلاثة من الخلايا



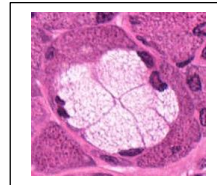
١- النوع الاول هو Serous acini الشكل

٢- النوع الثاني هو Mucous acini هي خلايا ذا شكل مضئ وتحتوي على نواة تتخذ



← موضع في قاعدة الخلية

٣- النوع الثالث هي بشكل مبسط النوع الثاني داخل النوع الاول (النوع الاول كقبة للنوع الثاني)



وهي Serous demilunes الشكل

NOTES FROM HISTOLOGY GUIDE WEBSITE

Serous Cells - arranged in a tube or acinus. These polarized cells have RER at their base (basophilic) and secretion granules (eosinophilic) at their apex

Mucous Cells - polarized cells with flattened nuclei at the bottom of the cells. They are very lightly stained with a "foamy" appearance (mucous has been extracted)

Serous Demilune - serous cells may appear as a cap on mucous cells

Intralobular Ducts - two types are found within lobules

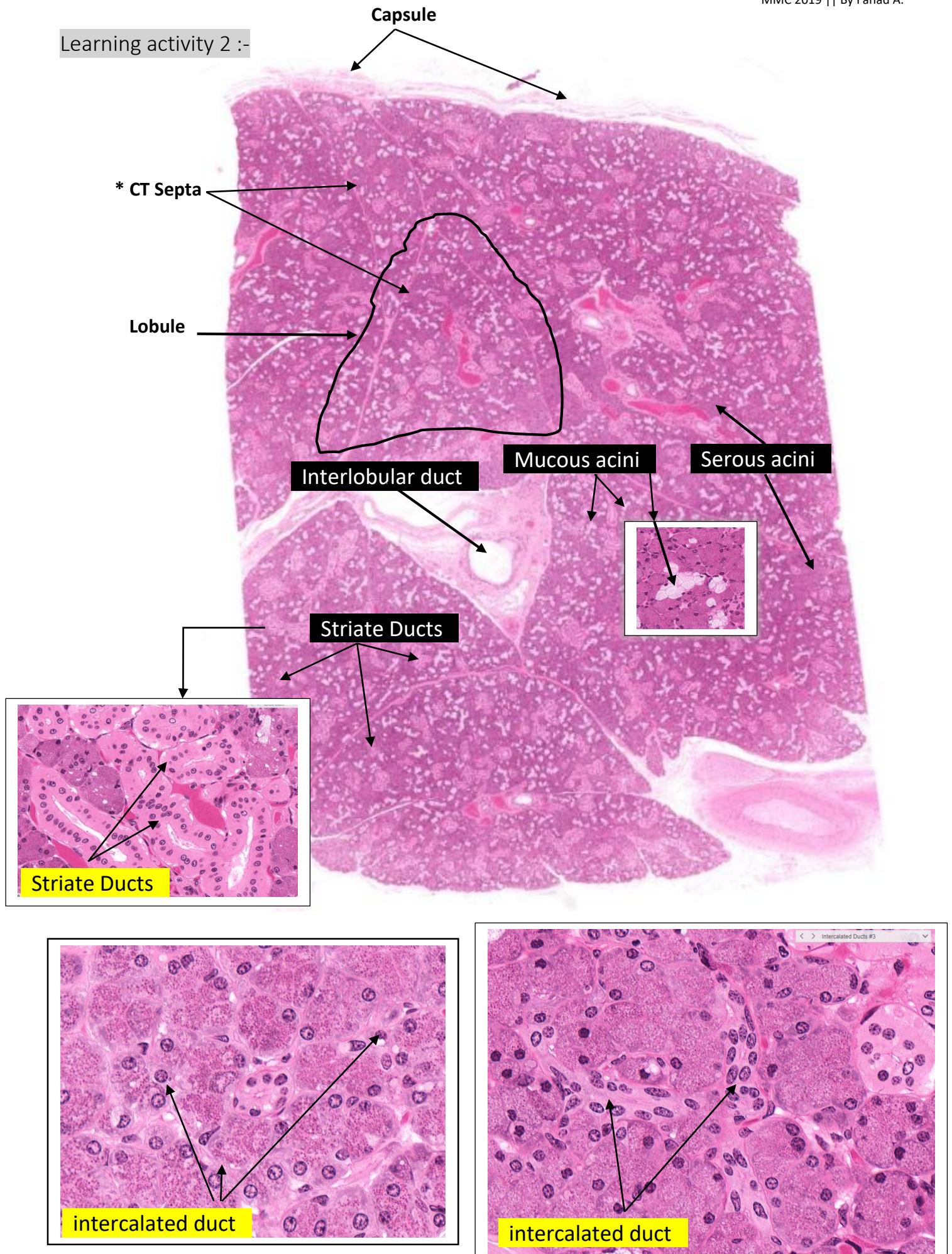
Intralobular Ducts - two types are found within lobules:

Intercalated Ducts: the smallest ducts that insert into and drain individual acini. They are more lightly stained than acini cells and are low cuboidal.

Striate Ducts: arise from intercalated ducts. They are columnar with basal striations and are surrounded by capillaries

Interlobular (or Extralobular) Duct: found outside of lobules.

Learning activity 2 :-



*CT Septa = connective tissue Septa

Parotid Gland

It secretes
primarily serous
and little
mucous

97-99% serous

Capsule

Lobule

Interlobular duct

Striate Ducts

Serous acini

Mucous acini

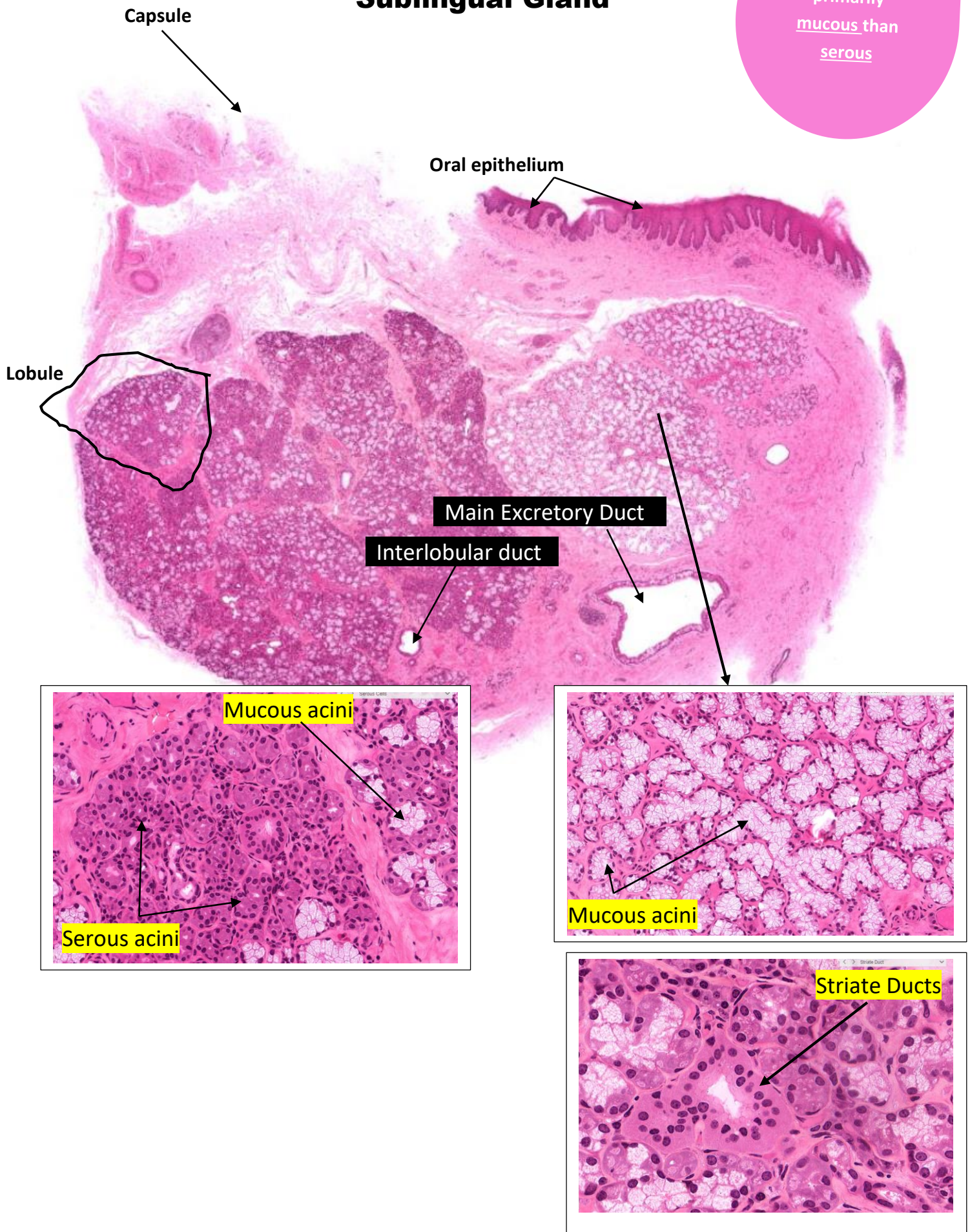
Serous acini

Intercalated Ducts

Intercalated Ducts

Sublingual Gland

It secretes
primarily
mucous than
serous



Questions required for this laboratory:-

Question: What is the function of the saliva?

Question: Describe the epithelium found in the larger intralobular and interlobular salivary ducts.

What is the reason behind the basal striation in the striated duct?

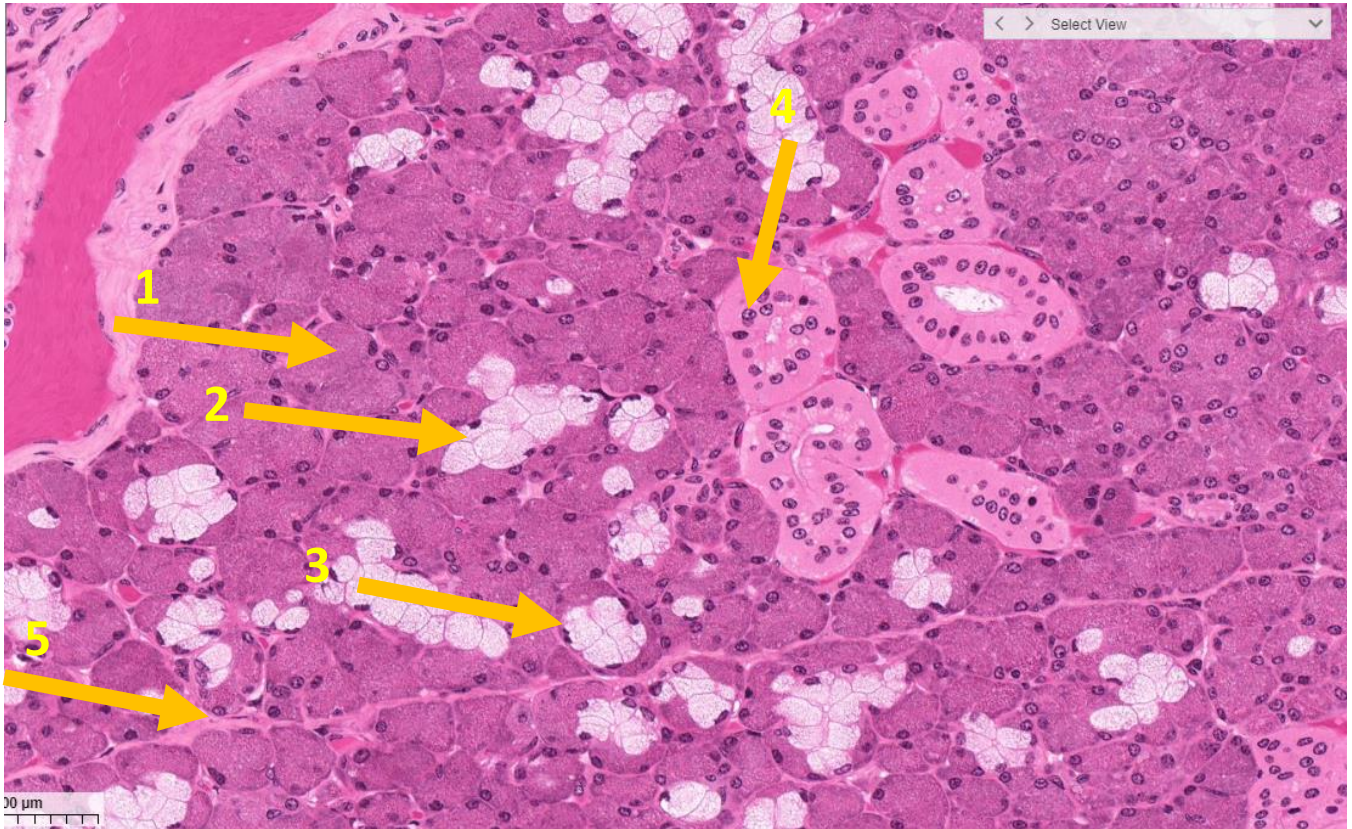
Question: what are histological differences between intercalated and striated ducts

Question: Compare the distribution of serous and mucous acini in Parotid, sublingual and submandibular glands.



Test

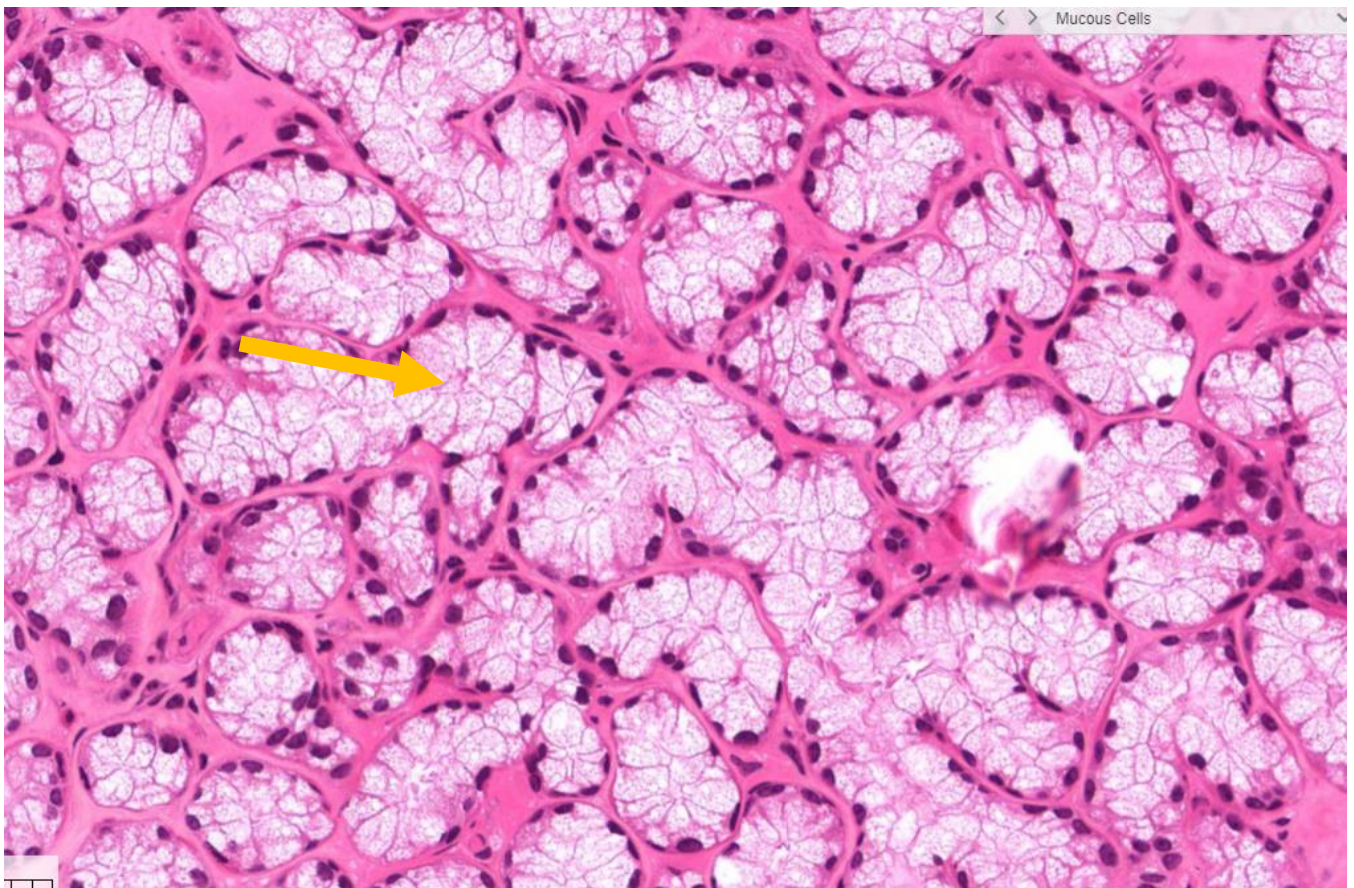
1- Name the structure pointed.



The answer

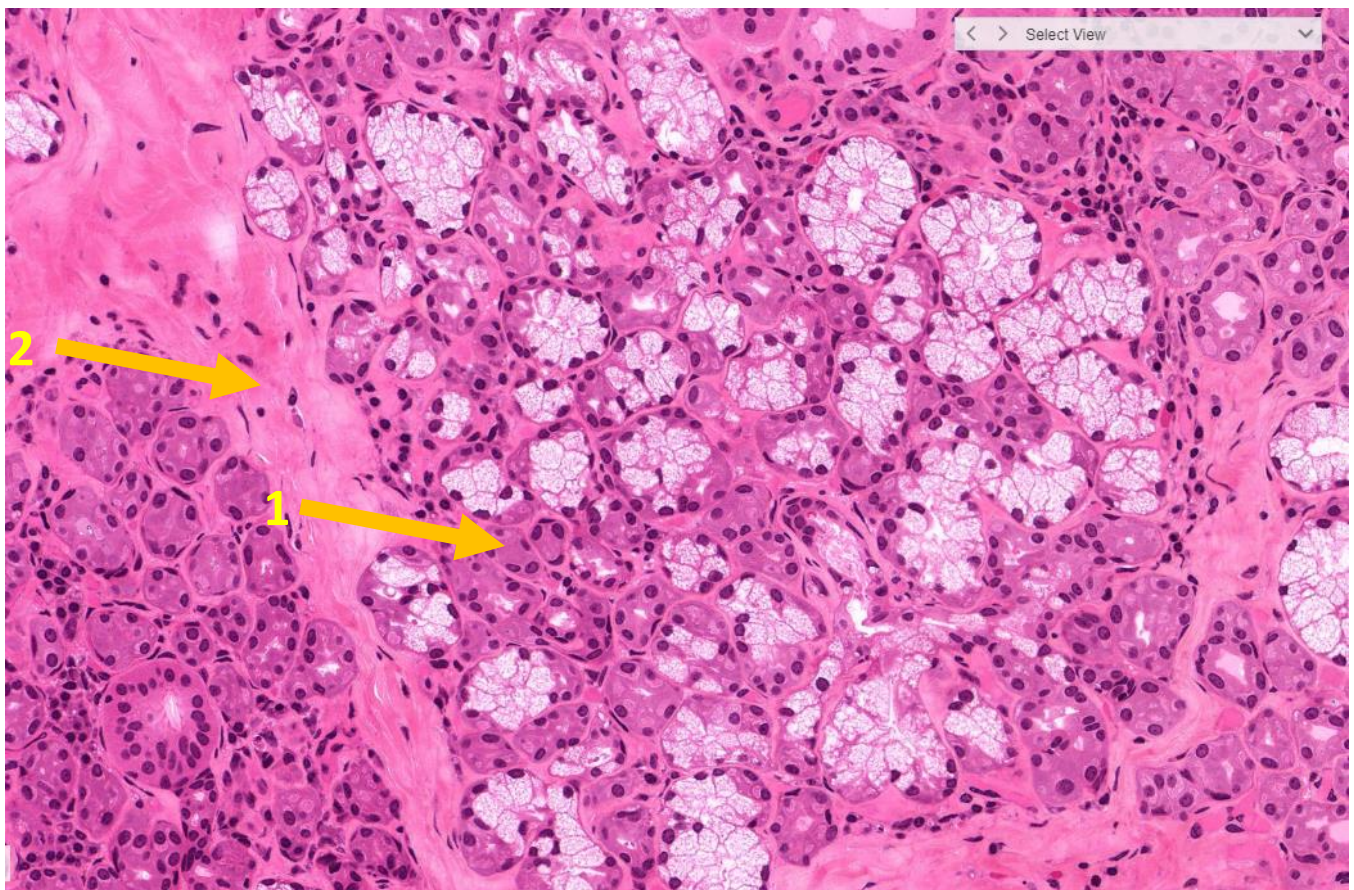
- 1- Serous acini
- 2- Mucous Cells
- 3- Serous Demilune
- 4- Striate Ducts
- 5- CT septa

2- Name the structure pointed.



The answer

Mucous Cells

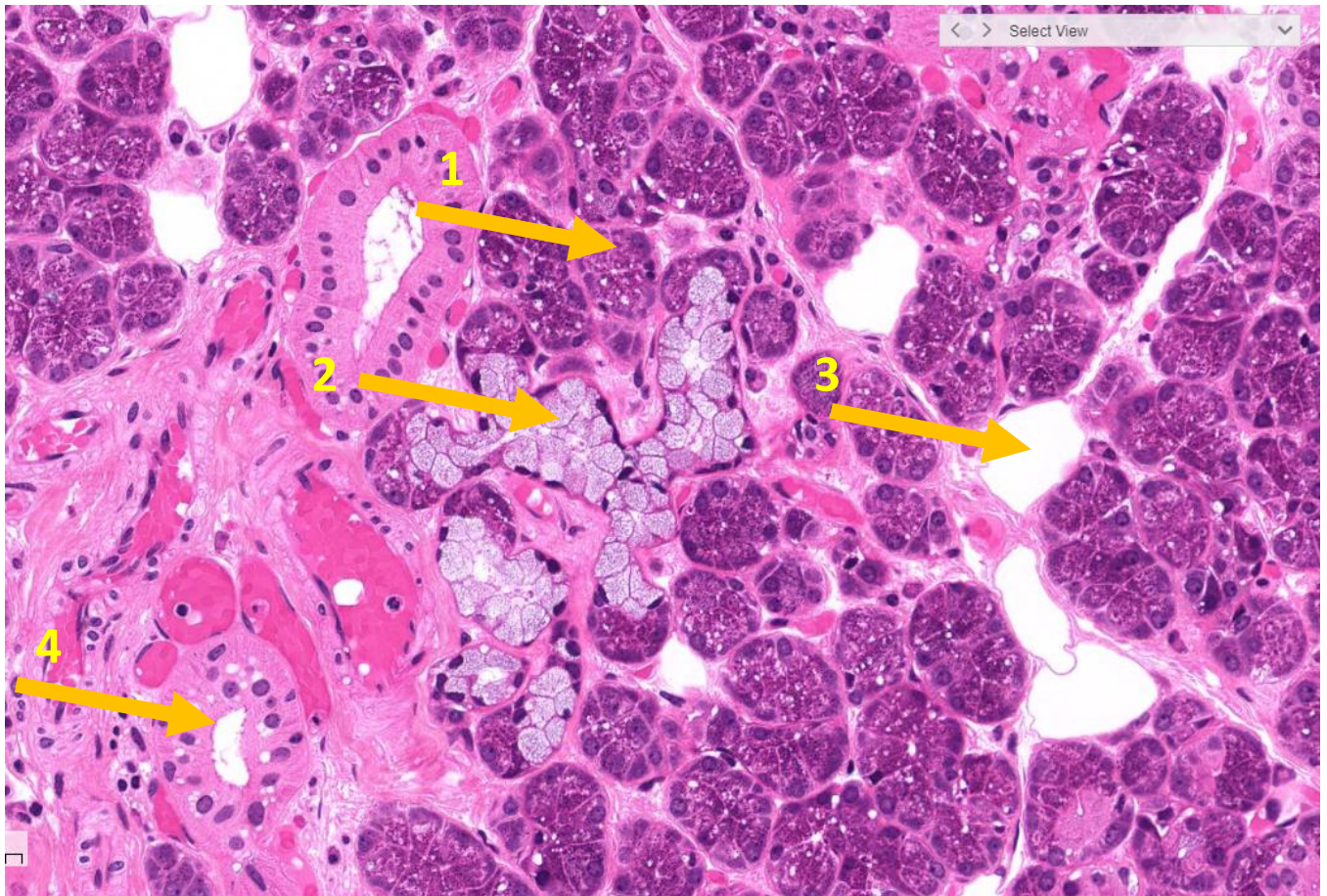


The answer

1- Serous Cells

2- CT septa

3- Name the structure pointed.



The answer

- 1- Serous acini
- 2- Mucous Cells
- 3- Adipose cell
- 4- Striate Ducts